

AGRILIGHT®



BETTER LIGHT, BETTER LIFE

LED Basic 25W Switchable

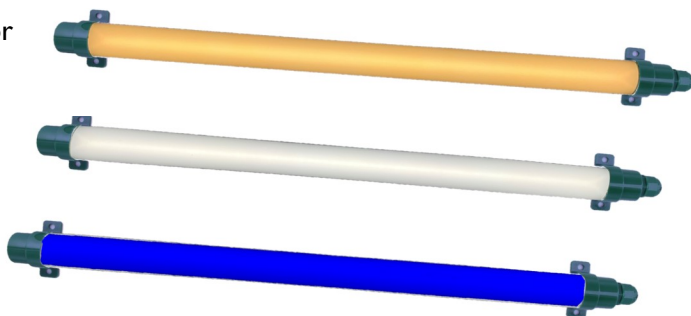
1 tube, 2 colours

LED Basic 25W Switchable

The ideal lighting for the poultry house: 1 tube, which contains 2 colours of light.

There are 2 variants: 1 tube with 2.700K (warm white) and 4.000K (neutral white) and 1 tube with 4.000K (neutral white) and blue light.

- / **2.700K** is the optimal light colour for laying hens for egg production, but also for parent animals.
- / **4.000K** is the ideal light colour for keeping broilers
- / **Blue light** has a scientifically proven effect that makes the birds more calm during the catch- and releasing period.



DIM unit 1500W Light Management System

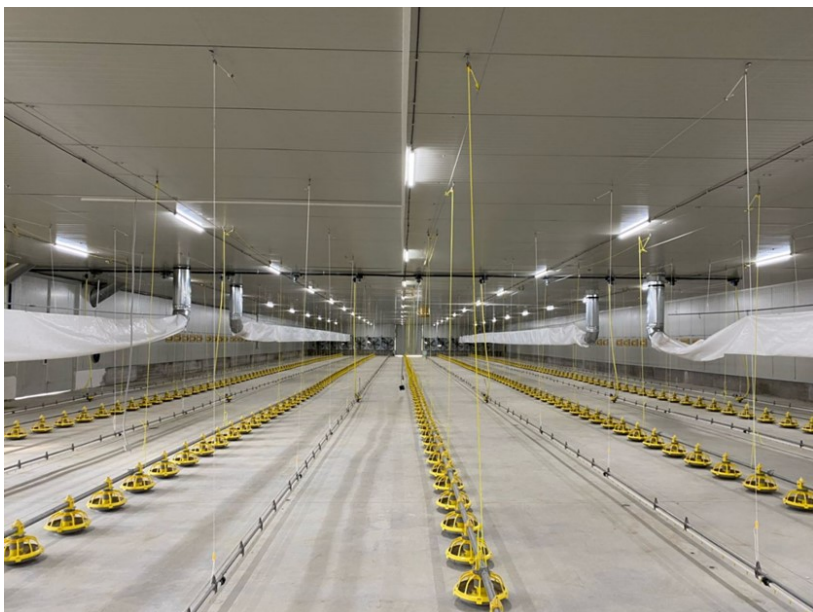
Complete system with LMS

- / Place in electrical cabinet on DIN rail
- / Control with 0-10V from climate computer
- / Change colours with Colour Switch Box
- / 5 protections :
 - / OVP: Surge Protection: 6 kV
 - / SCP: Short Circuit Protection
 - / OPP: Over Power Protection
 - / OCP: Over Current Protection
 - / OTP: Over Temperature Protection



Specifications

LED Basic 25W Switchable



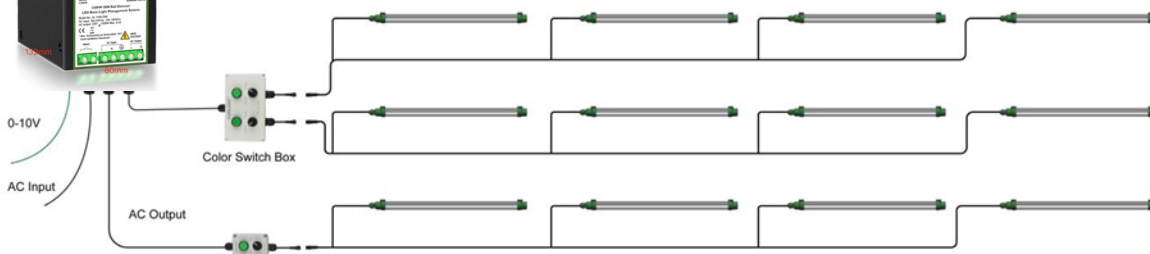
Light colour variant 1	2.700K and 4.000K
Light colour variant 2	Blue* (460nm) and 4.000K
Lumen output 2.700K	2.400 Lumen
Lumen output 4.000K	2.700 Lumen
Energy consumption	25 Watt
Lm/W 2.700K	100 Lm/W
Lm/W 4.000K	115 Lm/W
Voltage	180-264 VAC 50/60 Hz
IP	IP 67
Dimmable	100% - 1%
CRI	85
Warranty	5 years

* blue light is not measured in lumens



1500W Dimmer

System Overview



Agrilight b.v.

Vlotlaan 412
 2681 TZ Monster
 The Netherlands
 T: +31 (0) 174 287 287

E: info@agrilight.com
 I: www.agrilight.com



Better light, better life

